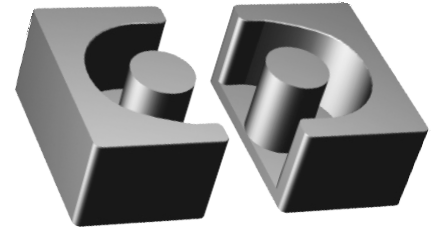
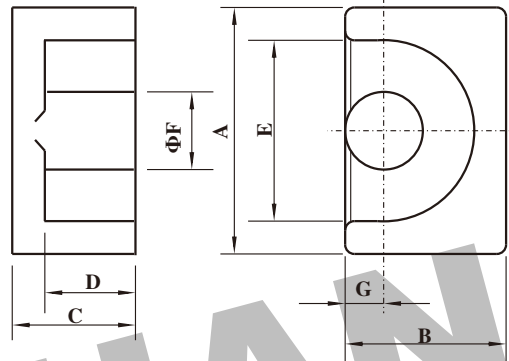


**Dimension: (UNIT:mm)**

A	24.0 ± 0.5
B	15.35-0.7
C	10.8 -0.2
D	7.05+0.3
E	16.5 ± 0.4
F	9.05-0.5
G	4.5±0.2
H	



**Test conditions**

AL: F=1.0KHz U=0.3V N=10Ts

**Effective parameter**

C1(mm) <sup>-1</sup>	Ae(mm <sup>2</sup> )	Le(mm)	Ve(mm <sup>3</sup> )	Weight(g)
0.52	78.7	41.1	3230	≈27

Core sets of high permeability grades.  
Clamping force for Al measurements,60+/-20N

Grade	AL (nH)	μe	Type number
H7K	11600±25%	≈4820	EP 20-H7K

Core sets for filter applications.

Clamping force for Al measurements,60+/-20N.

**Properties of core sets under power conditions**

Grade	AL (nH)	μe	AIR GAP μm	Type number
P4	160 ± 3%	≈67	≈790	EP 20-P4
	250 ± 3%	≈104	≈460	EP 20-P4
	315 ± 3%	≈131	≈350	EP 20-P4
	400 ± 3%	≈166	≈260	EP 20-P4
	630 ± 5%	≈262	≈150	EP 20-P4
	4435 ± 25%	≈1840	≈0	EP 20-P4
HQ2KA	3850 ± 25%	≈1600	≈0	EP 20-HQ2KA
HQ2K	160 ± 3%	≈67	≈790	EP 20-HQ2K
	250 ± 3%	≈104	≈460	EP 20-HQ2K
	315 ± 3%	≈131	≈350	EP 20-HQ2K
	400 ± 3%	≈166	≈260	EP 20-HQ2K
	630 ± 5%	≈262	≈150	EP 20-HQ2K
	3550 ± 25%	≈1480	≈0	EP 20-HQ2K

Grade	B (mT)at	Core loss (w) at			
	H=250 A/m F=25KHz T=100℃	F=25 KHz B=200mT T=100℃	f=100 KHz B=100mT T=100℃	F=100 KHz B=200mT T=100℃	F=400 KHz B=50mT T=100℃
P4	≥320	-	≤0.25	≤1.6	-
HQ2KA	≥340	-	≤0.2	≤1.3	≤0.5
HQ2K	≥315	-	≤0.36	-	≤0.62

**Properties of core sets under power conditions (continued)**

Grade	B (mT)at	Core loss (w) at			
	H=250 A/m F=25KHz T=100℃	F=500 KHz B=50mT T=100℃	F=500 KHz B=100mT T=100℃	F=1.0 MHz B=30mT T=100℃	F=3.0MHz B=10mT T=100℃
P4	≥320	-	-	-	-
HQ2KA	≥340	≤1.0	-	-	-
HQ2K	≥315	-	-	-	-

**Note:**

- 1:Document is the property of FUAN Inc & is not allow to be duplicated without authorization
- 2:RoHS compliant.